

# ANTARES

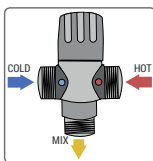
for water and fire



**Product group:** Thermostatic mixers - Mix San Series

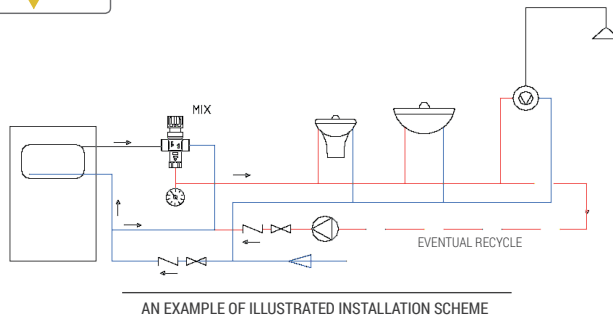
**Code:** C.053.10

**Description:** Thermostatic mixer 1"



entrance; MIX = outgoing mixed water.

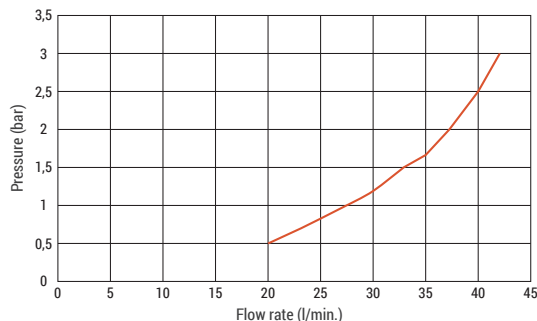
- If the pressure of the hot or cold water are very different amongst themselves you need to install on the entrance ports check valves.
- If the water coming in contains debris you need to install filters.



## Technical Data

- Entrance 1" M outgoing 1" M.
- Max. working pressure 10 bar (for pressure over 5 bar install a reducer)
- Recommended pressure 50 kpa (0.5 bar).
- Max. incoming temp. 85°C
- Regulating range 30÷65°C
- Scale range on knob 20÷50°C
- KV 1.7 m3/h

Pressure (bar)	0,5	1	2	3
Flow rate (l/min)	20	28	37	42



## UK Thermostatic mixer Art C.053.10 - 1"

Thermostatic mixers regulate automatically at a prefixed rate the temperature of hot and cold water.

They allow for maximum comfort, considerable water and energy saving, and avoids accidental scalding. The mixer is preset at the factory using cold water at 15°C and hot water at 65°C at 3bar.

The C.053.10 uses a standard cartridge of 1/2". It allows for the distribution of hot water at constant temperature: a not too high temperature inhibits calcium deposits and possible corrosion. In case of failing hot or cold water supply, the mixer blocks the flow instantly.

It is ideal for systems distributing domestic water because due to the cartridge it results in a precise and fast mechanism, and the knob showing the various stages of centigrades allows an easy use and cleaning or substitutions are simple. Ideal for showers, baths, washbasins in schools, hospitals, sports and leisure facilities etc. This thermostatic mixer can be installed wherever necessary or in pre-mounted inspection boxes where domestic hot water is distributed.

The knob is equipped with a red stop button at 38°C. The incoming and outgoing ports have a 1" M G connection. Using the kit, which is sold separately, you obtain incoming and outgoing ports of 3/4" m with non return valves DN on the ports.

The ports are also equipped for seating copper pipe Ø 22, therefore kits can be applied containing nut 1" and olive Ø 22.

## Hydraulic performance

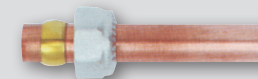
- See the illustration delivery/pressure
- Antiscalding function in case cold water stops flowing from mains, the mixer automatically closes the incoming hot water stopping the outgoing flow to avoid scalding.

## Certificates

- Designed according to the main requirements standards EN 1111
- Cartridge compliant to requirements ACS - dossier n. 04ACC LY 112

## Installation

- Observe strictly the connections: HOT (H) = hot water entrance ; COLD (C) = cold water



## Art. U.006

Brass nut with olive in brass for the connection with copper pipes.

Connections	3/8" F x 1/2" M	1/2" F x 1/4" M	1/2" F x 1/5" M	1/2" F x 1/6" M	1" F x 2/2" M
Order code	U.006.52	U.006.54	U.006.55	U.006.56	U.006.72



## Art. G.133

M.F. brass fitting for thermometer or probe immersion pocket. With or without thermometer art. E. 078.

Cover type	Length 30 mm. - internal Ø 9,5 mm.					
Diameter Ø	1/2" F x 1/2" M		3/4" F x 3/4" M		3/4" F x 3/4" M	
End type	cone		Eurocone		flat	
Model	w/o thermom.	w thermom.	w/o thermom.	w thermom.	w/o thermom.	w thermom.
Order code	G.133.52	G.133.42	G.133.53	G.133.43	G.133.60	G.133.80
Cover type	Length 30 mm. - internal Ø 10 mm.					
Diameter Ø	1" F x 1" M		1 1/4" F x 1 1/4" M		1 1/2" F x 1 1/2" M	
End type	flat		flat		flat	
Model	w/o thermom.	w thermom.	w/o thermom.	w thermom.	w/o thermom.	w thermom.
Order code	G.133.50	G.133.40	G.133.54	G.133.84	G.133.62	G.133.82

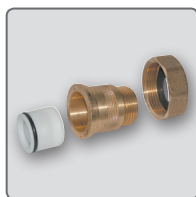


## Art. G.183

Brass joint consisting of swivel metal sleeves and spigot. Flat seat.

Metal sleeve Ø	3/4" F	1" F	1 1/4" F	1 1/2" F	2" F
Spigot Ø	1/2" M	3/4" M	1" M	1 1/4" M	1 1/2" M
Order code	G.183.02	G.183.03	G.183.10	G.183.14	G.183.12

## Connection fittings for mixing valves



## Art. P.002

Brass fitting with nylon check-valve insertion positioned in two directions.

To ensure a single flow direction to prevent possible contamination.

Nut	3/4" F	1" F	1 1/4" F	1 1/2" F	1 1/2" F
Spigot	1/2" M	3/4" M	1" M	1" M	1 1/4" M
Order code	P.002.02	P.002.03	P.002.30	P.002.10	P.002.14

# ANTARES

for water and fire

Kent Business Centre - Romney Place - Maidstone ME15 6LH  
 Tel: 0845 60 18 681  
 Fax: 0845 60 18 682  
 email: uk@antaresint.com  
 Internet: www.antaresint.com

# ANTARES

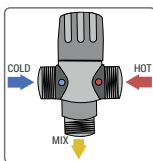
for water and fire



Famiglia prodotto: miscelatori termostatici - Serie Mix San

Codice: C.053.10

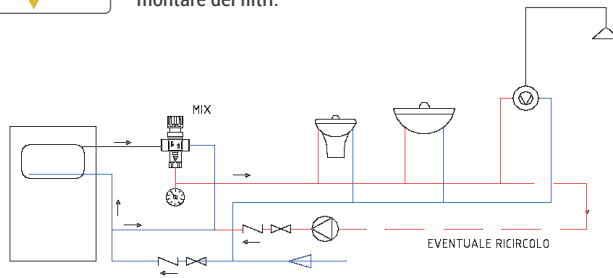
Descrizione: Miscelatore termostatico 1"



entrata acqua fredda; MIX = uscita acqua miscelata.

• Se la pressioni dell'acqua calda e fredda sono sensibilmente diverse fra loro occorre montare sugli ingressi delle valvole di ritegno.

• Se l'acqua della alimentazioni contiene dei corpi estranei occorre montare dei filtri.

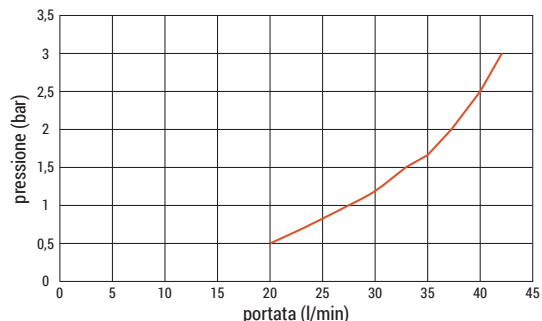


SCHEMA DI INSTALLAZIONE ILLUSTRATIVO, NON ESECUTIVO

## Dati tecnici

- Ingressi: 1" G maschio Uscita: 1" G maschio
- Pressione massima di esercizio: 10 bar (per pressioni sopra i 5 bar montare un riduttore)
- Pressione raccomandata: 50 kPa (0,5 bar)
- Temperatura max ingresso : 85 °C
- Campo di regolazione: 30÷65 °C Scala graduata manopola: 20÷50 °C
- KV: 1,7 m3/h

Pressione (bar)	0,5	1	2	3
Portata (l/min)	20	28	37	42



## Miscelatore termostatico Art. C.053.10 da 1"

I miscelatori termostatici regolano ad un valore prefissato la temperatura dell'acqua miscelando automaticamente l'acqua calda e l'acqua fredda. Consentono il massimo comfort, una sensibile economia di acqua ed energia, evitano il pericolo di scottature accidentali. Il miscelatore è tarato in fabbrica utilizzando acqua fredda a 15 °C ed acqua calda a 65 °C, a 3 bar. Il C.053.10 utilizza una cartuccia termostatica standard da 1/2". Permette la distribuzione dell'acqua calda sanitaria a temperatura costante; una temperatura non troppo elevata inibisce le incrostazioni calcaree e le possibili corrosioni. In caso di mancata alimentazione dell'acqua calda o fredda, il miscelatore blocca l'erogazione istantaneamente. E' ideale per gli impianti di distribuzione di acqua sanitaria in quanto grazie alla cartuccia risulta un dispositivo veloce e preciso, inoltre la manopola con scala in gradi centigradi ne consente un utilizzo comodo e intuitivo ed anche le operazioni di pulizia e sostituzione risultano molto semplici. Indicato per alimentare docce, vasche, lavabi, ecc. in abitazioni, scuole, ospedali, centri sportivi, ecc. La legge 10/91 del D.P.R. 412/93 fissa la temperatura massima per gli impianti centralizzati di distribuzione dell'acqua calda sanitaria a 48°C con una tolleranza di +5°C. Questo miscelatore termostatico soddisfa questa norma e si può montare all'ingresso di ogni utilizzazione o nelle cassette premontate di distribuzione dell'acqua calda sanitaria. La manopola è dotata di pulsante rosso di blocco a 38°C. Gli ingressi e l'uscita hanno connessione 1" G maschio. Applicando il Kit, da acquistare separatamente, si ottengono ingressi e uscite da 3/4" maschi con valvole di non ritorno DN20 sugli ingressi. Gli ingressi del miscelatore sono inoltre dotati di sede per tubo rame Ø 22, possono quindi essere applicati anche i Kit composti da un dado da 1" e un ovisa Ø 22.

## Prestazioni idrauliche

- Si veda il grafico Pressione/Portata.
- Funzione antiscottatura: in mancanza di acqua fredda dall'impianto il miscelatore chiude automaticamente l'ingresso dell'acqua calda interrompendo l'erogazione in uscita per evitare possibili scottature.

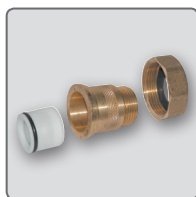
## Certificazioni

- Progettato secondo i principali punti della norma UNI EN 1111.
- Cartuccia conforme ai requisiti ACS - dossier n° 04 ACC LY 112.

## Installazione

- Rispettare assolutamente le connessioni: HOT (H) = entrata acqua calda; COLD (C) =

## Raccordi di connessione per miscelatori

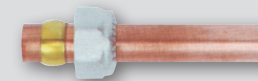


### Art. P.002

Bocchettone in ottone con valvola di non ritorno ad inserimento in nylon posizionabile nelle due direzioni.

Per garantire un unico senso di flusso per prevenire possibili contaminazioni.

Dado	3/4" F	1" F	1 1/4" F	1 1/2" F	1 1/2" F
Códulo	1/2" M	3/4" M	1" M	1" M	1 1/4" M
Art. codice	P.002.02	P.002.03	P.002.30	P.002.10	P.002.14



### Art. U.006

Dado in ottone nichelato per valvole e detentori per la connessione con tubo di rame.

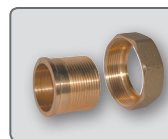
Attacchi	3/8" F x 1/2"	1/2" F x 1/4"	1/2" F x 1/5"	1/2" F x 1/6"	1" F x 2/2"
Art. codice	U.006.52	U.006.54	U.006.55	U.006.56	U.006.72



### Art. G.133

Raccordo in ottone M.F. porta-termometro o porta-sonda con guaina. Fornito con o senza termometro Art. E.078.

Tipo di guaina	Lunghezza 30 mm. - Ø interno 9,5 mm.					
Diametro Ø	1/2" F x 1/2" M	3/4" F x 3/4" M	3/4" F x 3/4" M	3/4" F x 3/4" M	3/4" F x 3/4" M	3/4" F x 3/4" M
Sede	conica	Euroconus	piana	piana	piana	piana
Tipo	senza term.	con term.	senza term.	con term.	senza term.	con term.
Art. codice	G.133.52	G.133.42	G.133.53	G.133.43	G.133.60	G.133.80
Tipo di guaina	Lunghezza 30 mm. - Ø interno 10 mm.					
Diametro Ø	1" F x 1" M	1 1/4" F x 1 1/4" M	1 1/2" F x 1 1/2" M	1 1/2" F x 1 1/2" M	1 1/2" F x 1 1/2" M	1 1/2" F x 1 1/2" M
Sede	piana	piana	piana	piana	piana	piana
Tipo	senza term.	con term.	senza term.	con term.	senza term.	con term.
Art. codice	G.133.50	G.133.40	G.133.54	G.133.84	G.133.62	G.133.82



### Art. G.183

Giunzione in ottone composta da calotta girevole e códulo. Sede piana.

Calotta Ø	3/4" F	1" F	1 1/4" F	1 1/2" F	2" F
Códulo Ø	1/2" M	3/4" M	1" M	1 1/4" M	1 1/2" M
Art. codice	G.183.02	G.183.03	G.183.10	G.183.14	G.183.12

ANTARES  
for water and fire

Via degli alpini, 144 - 55100 Lucca  
Tel: 0583 473701  
Fax: 0583 494366  
email: ant3@antaresint.com  
Internet: www.antaresint.com

# ANTARES

for water and fire



**Produktfamilie:** Thermostatische Mischer - Serie Mix San

**Bestellnummer:** C.053.10

**Beschreibung:** Thermostatischer Mischer 1"

## DE Thermostatischer Mischer Art. C.053.10 von 1"

Thermostatische Mischer regulieren die Wassertemperatur auf einen eingestellten Wert, indem sie das kalte und warme Wasser automatisch mischen. Sie erlauben maximalen Komfort, einen sensiblen Verbrauch von Wasser und Energie und vermeiden die Gefahr versehentlicher Verbrennungen. Der Mischer ist ab Werk geeicht, um 15°C kaltes Wasser und 65°C warmes Wasser bei 3 Bar zu nutzen. Der Artikel C.053.10 arbeitet mit einer 1/2" standardisierten thermostatischen Kartusche. Er erlaubt die Verteilung des Warmwassers bei einer konstanten Temperatur; eine nicht zu hohe Temperatur hemmt Verkalkungen und mögliche Korrosion. Im Falle eines verhinderten Kalt- oder Warmwasserzuflusses blockiert der Mischer die Versorgung augenblicklich. Dank der Kartusche ist der Mischer ein schneller und präziser Apparat, ideal für Sanitäranlagen. Ausserdem erlaubt die Skala auf dem Regler in Celsius eine leichte Handhabung, Reinigung und Auswechslung. Er ist zweckmässig für Duschen, Wannen, Waschbecken usw. in privaten Wohnungen und Häusern, als auch Schulen, Krankenhäusern, Sportzentren usw. Dieser thermostatische Mischer kann am Anfang einer Wasserversorgung oder an vorabmontierte Gehäuse installiert werden. Der Regler ist mit einem roten Knopf ausgestattet, der bei 38°C blockiert. Der Ein- und Ausgang haben 1" AG Verschraubungen. Die separat zu bestellenden Anschlussverschraubungen zur Installation haben Ein- und Ausgänge zu 3/4" AG mit eingebautem Rückschlagventil DN20 am Eingang. Die Eingänge des Mixers sind ausserdem ab Werk für Kupferrohre mit Ø 22 ausgestattet und insofern kann auch Zubehör mit einer Mutter zu 1" und einem Schneidring mit Ø 22 installiert werden.

### Hydraulischer Leistungsumfang

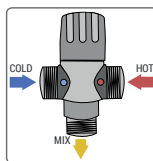
### Zertifikate

- Man beachte die Tabelle Druck/Leistung.
- Verbrennungsschutz: bei Kaltwassermangel aus dem Wassersystem schließt der Mischer automatisch den Zufluss des heissen Wassers und unterbricht den Wasserfluss, um mögliche Verbrennungen zu vermeiden.

- Entworfen basierend auf den Grundlagen der Norm UNI EN 1111.
- Die Kartusche folgt den Voraussetzungen ACS - Dossier Nr. 04ACC LY 112.

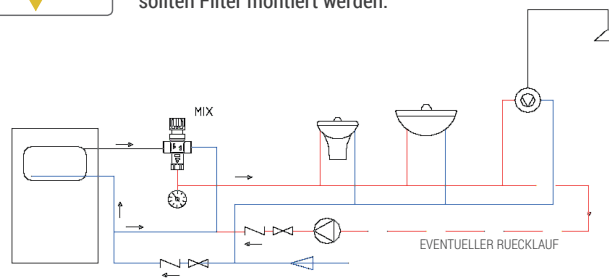
### Installation

- Die Verbindungen müssen wie folgt beachtet werden: HOT (H) = Heisswassereingang;



COLD (C) = Kaltwassereingang; MIX = Mischwasserausgang.

- Wenn der Druckunterschied zwischen kaltem und warmem Wasser hoch ist, wird empfohlen an den Eingängen eine Anschlussverschraubung mit eingebautem Rückschlagventil zu montieren.
- Wenn das Wasser der Wasserleitung Verunreinigungen enthält, sollten Filter montiert werden.

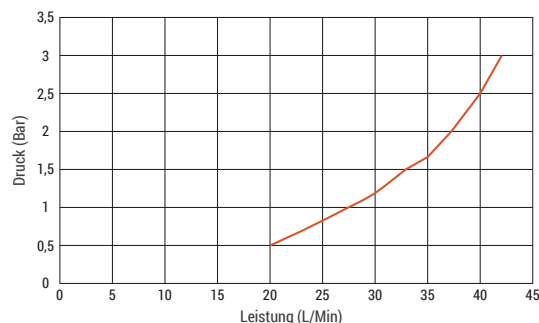


ILLUSTRATIVES INSTALLATIONSSCHEMA, NICHT ZUR AUSFÜHRUNG

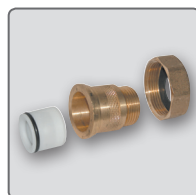
### Technische Daten

- Eingänge: 1" AG; Ausgang: 1"AG
- Maximaler Arbeitsdruck: 10 Bar (Wenn der Druck über 5 Bar liegt, sollte ein Druckreduzierer eingebaut werden)
- Empfohlener Druck: 50 Kpc (0,5 Bar)
- Maximale Eingangstemperatur: 85°C
- Regulierfeld: 30-65°C
- Staffelung der Reglerskala: 20-50°C
- KV: 1,7 m³/h

Druck (Bar)	0,5	1	2	3
Leistung (L/Min)	20	28	37	42



### Anschlussverschraubungen für Mischer

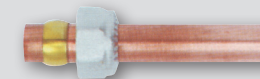


#### Art. P.002

Anschlussverschraubung aus Messing mit eingebautem Rückschlagventil.

Wird benutzt um eine einzige Abflußrichtung zu garantieren und um jegliche Verunreinigung zu verhindern.

Drehbare Mutter	3/4" IG	1" IG	1 1/4" IG	1 1/2" IG	1 3/4" IG
Zapfen	1/2"AG	3/4"AG	1" AG	1" AG	1 1/4" AG
Bestellnr.	P.002.02	P.002.03	P.002.30	P.002.10	P.002.14



#### Art. U.006

Messingmutter mit Schneidring für Verbindungen mit Kupferrohr.

Anschlüsse	3/8" IG x 12	1/2" IG x 14	1/2" IG x 15	1/2" IG x 16	1" IG x 22
Bestellnr.	U.006.52	U.006.54	U.006.55	U.006.56	U.006.72



#### Art. G.133

Messingverschraubung AG. IG.-Hülse für Thermometer oder Sonde mit Tauchhülse. Ausgestattet mit oder ohne Thermometer Art. E.078.

Hülsentyp	Länge 30 mm. - Ø innendurchmesser 9,5 mm.					
Durchmesser Ø	1/2" IG x 1/2" AG		3/4" IG x 3/4" AG		3/4" IG x 3/4" AG	
Endauslauf	Konisch		Euroconus		Eben	
Typ	ohne Therm.	mit Therm.	ohne Therm.	mit Therm.	ohne Therm.	mit Therm.
Bestellnr.	G.133.52	G.133.42	G.133.53	G.133.43	G.133.60	G.133.80
Hülsentyp	Länge 30 mm. - Ø innendurchmesser 10 mm.					
Durchmesser Ø	1" IG x 1" AG		1 1/4" IG x 1 1/4" AG		1 1/2" IG x 1 1/2" AG	
Endauslauf	Eben		Eben		Eben	
Typ	ohne Therm.	mit Therm.	ohne Therm.	mit Therm.	ohne Therm.	mit Therm.
Bestellnr.	G.133.50	G.133.40	G.133.54	G.133.84	G.133.62	G.133.82



#### Art. G.183

Messinganschluß bestehend aus Kappe und Schaft. Ebener Endauslauf.

Kappe Ø	3/4" IG	1" IG	1 1/4" IG	1 1/2" IG	2" IG
Schaft Ø	1/2"AG	3/4"AG	1" AG	1 1/4" AG	1 1/2" AG
Bestellnr.	G.183.02	G.183.03	G.183.10	G.183.14	G.183.12

# ANTARES

for water and fire

Feringastrasse 6 - 85774 Unterföhring  
 Tel: 0899 394 89 50  
 Fax: 0899 394 89 53  
 email: de@antaresint.com  
 Internet: www.antaresint.com

# ANTARES

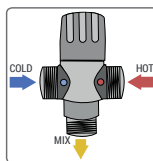
for water and fire



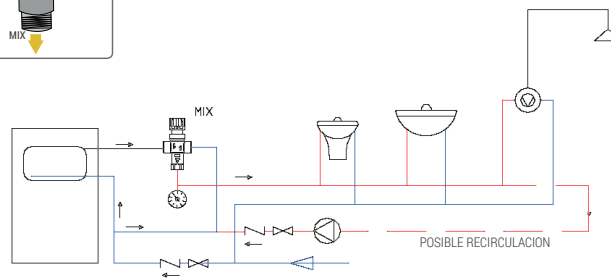
Familia producto: mezcladores termostáticos – Serie Mix San

Código: C.053.10

Descripción: Mezclador termostático 1"



de instalar en las entradas, válvulas de retención.  
• Si el agua de alimentación contiene cuerpos extraños, hace falta instalar filtros.

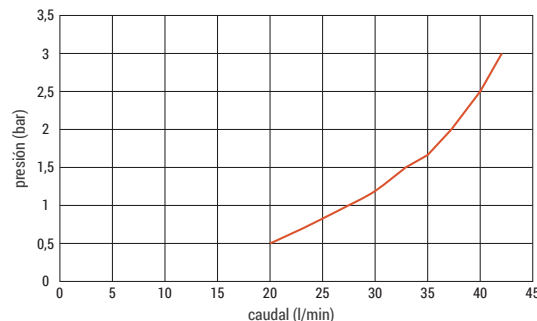


ESQUEMA DE INSTALACION INDICATIVO, A MODO DE EJEMPLO

## Datos técnicos

- Ingresos: 1" M. Salida: 1" M.
- Presión máxima de trabajo: 10 bar (para presiones sobre los 5 bar instalar un reductor de presión)
- Presión recomendada: 50 kPa (0,5 bar)
- Temperatura máx. ingreso : 85 °C
- Campo de regulación: 30÷65 °C
- Escala graduada perilla: 20÷50° C
- KV: 1,7 m3/h

Presión (bar)	0,5	1	2	3
Caudal (l/min)	20	28	37	42



## ES Mezclador termostático Art. C.053.10 de 1"

Los mezcladores termostáticos regulan a un valor prefijado la temperatura del agua, mezclando automáticamente el agua caliente y el agua fría. Permiten el máximo confort, un sensible ahorro de energía y agua, y evitan el peligro de quemaduras accidentales. El mezclador está calibrado en fábrica utilizando agua fría a 15° C y agua caliente a 65° C a 3 bar. El C.053.10 utiliza un cartucho termostático estándar de ½". Permite la distribución del agua caliente sanitaria a temperatura constante; una temperatura no demasiado elevada inhibe las incrustaciones calcáreas y las posibles corrosiones. En el caso que faltara agua fría o caliente, el mezclador bloquea inmediatamente el suministro de agua. Es ideal para los sistemas de distribución de agua sanitaria ya que, gracias a su cartucho resulta un dispositivo veloz y preciso, además la perilla con escala en grados centígrados permite el uso cómodo e intuitivo, y también las operaciones de sustitución y limpieza resultan muy simples. Indicado para alimentar duchas, bañeras, lavabos, etc. en casas, escuelas, hospitales, centros deportivos, etc. Este mezclador termostático se puede instalar al ingreso de cada utilitario o en las cajas premontadas de distribución del agua caliente sanitaria. La perilla posee un botón rojo de bloqueo a 38°C. Las entradas y la salida son de 1" M. Instalando el kit (no incluido) se pueden obtener entradas y salida de ¾" M. con válvulas de no retorno DN20 en las entradas. Las entradas del mezclador, están predisuestas para conectar a tubo de cobre de Ø 22 ; para lo cual pueden ser aplicados los kits específicos con una tuerca de 1" y una ojiva Ø 22.

## Rendimiento hidráulico

- Ver gráfico Presión/Caudal.
- Función anti-quemadura: si falta agua fría, el mezclador cierra automáticamente el ingreso del agua caliente interrumpiendo la salida del agua para evitar quemaduras.

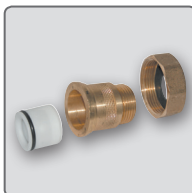
## Certificaciones

- Proyectado en base a los puntos principales de la norma UNI EN 1111.
- Cartucho compatible con requisitos ACS dossier n° 04 ACC LY 112.

## Instalación

- Respetar absolutamente las conexiones : HOT (H)= Entrada agua caliente ; COLD (C)= Entrada agua fría; MIX = salida agua mezclada.
- Si las presiones del agua caliente y fría son muy diferentes entre ellas se aconseja

## Racores de conexión para mezcladores

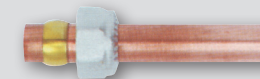


### Art. P.002

Adaptador de latón con válvula de retención incluida. Con dirección determinable.

Se usa cuando se debe garantizar un único sentido de circulación al fluido, previniendo posibles contaminaciones en la instalación.

Tuerca	¾" H	1" H	1 ¼" H	1 ½" H	2" H
Código	½" M	¾" M	1" M	1" M	1 ¼" M
Código	P.002.02	P.002.03	P.002.30	P.002.10	P.002.14



### Art. U.006

Tuerca de latón cromado 1/2" H. para la unión al tubo de cobre

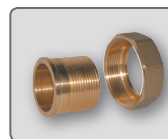
Enlaces	¾" H x 12	½" H x 14	½" H x 15	½" H x 16	1" H x 22
Código	U.006.52	U.006.54	U.006.55	U.006.56	U.006.72



### Art. G.133

Racor de latón M: H. porta-termómetro o porta-sonda con forro. Se suministra con o sin termómetro Art.E.078.

Tipo de vaina	Longitud 30 mm. - Ø interno 9,5 mm.					
Diámetro Ø	½" H x ½" M		¾" H x ¾" M		¾" H x ¾" M	
Extremidad	cónica		Euroconus		plana	
Tipo	sin term.	con term.	sin term.	con term.	sin term.	con term.
Código	G.133.52	G.133.42	G.133.53	G.133.43	G.133.60	G.133.80
Tipo de vaina	Longitud 30 mm. - Ø interno 10 mm.					
Diámetro Ø	1" H x 1" M		1 ¼" H x 1 ¼" M		1 ½" H x 1 ½" M	
Extremidad	plana		plana		plana	
Tipo	sin term.	con term.	sin term.	con term.	sin term.	con term.
Código	G.133.50	G.133.40	G.133.54	G.133.84	G.133.62	G.133.82



### Art. G.183

Unión de latón campuesta de tuerca giratoria y canuto. Extremidad plana.

Tuerca giratoria Ø	¾" H	1" H	1 ¼" H	1 ½" H	2" H
Código Ø	½" M	¾" M	1" M	1 ¼" M	1 ½" M
Código	G.183.02	G.183.03	G.183.10	G.183.14	G.183.12

# ANTARES

for water and fire

C/Rio Llobregat, 11 (Post) - 28935 Móstoles - Madrid  
Tel: 900 99 39 05  
Fax: 900 99 39 04  
email: es@antaresint.com  
Internet: www.antaresint.com

# ANTARES

for water and fire



Famille produit: mitigeurs thermostatiques – Série Mix San

Code: C.053.10

Description: mitigeur thermostatique 1"

## FR Mitigeur thermostatique Art. C.053.10 de 1"

Les mitigeurs thermostatiques règlent à une valeur prédéfinie la température de l'eau en mélangeant automatiquement l'eau chaude et l'eau froide. Ils consentent le confort maximum, une sensible économie d'eau et d'énergie et évite le risque de brûlures accidentelles. Le mitigeur est taré en usine en utilisant de l'eau froide à 15°C et eau chaude à 65°C, à 3 Bar. Le C.053.10 utilise une cartouche thermostatique standard de 1/2". Il permet la distribution d'eau chaude sanitaire à température constante; une température non trop élevée empêche les incrustations calcaires et les possibles corrosions.

En cas de manque d'alimentation d'eau chaude ou froide, le mitigeur bloque la distribution immédiatement. Il est idéal pour les installations de distribution d'eau sanitaire car, grâce à la cartouche, il en résulte un dispositif rapide et précis. En plus, la poignée avec l'échelle en grades centigrades en permet un usage pratique et intuitif et même les opérations de nettoyage et remplacement sont très simples. Indiqué pour alimenter douches, baignoires, lavabos, etc dans habitations, écoles, hôpitaux, centres sportifs, etc.

Ce mitigeur thermostatique peut être monté à l'entrée de chaque utilisation ou dans les caisses prémontées de distribution de l'eau chaude sanitaire. La poignée est munie d'un bouton rouge de bloc à 38°C. Les entrées et la sortie ont connexion 1" G mâle. En utilisant le kit, à acheter à part, on obtient entrées et sorties de 3/4" M. avec vannes de non-retour DN20 sur les entrées. Les entrées du mitigeur sont aussi avec siège pour tuyau cuivre Ø 22 et peuvent donc être appliqués aussi les Kits composés d'un écrou de 1" et une ogive Ø 22.

### Prestations hydrauliques

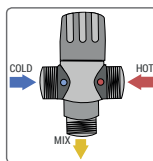
- Voir le dessin Pression/Débit
- Fonction anti-brûlure: en cas de manque d'eau froide dans l'installation, le mitigeur ferme automatiquement l'entrée de l'eau chaude, interrompant la distribution en sortie pour éviter de possibles brûlures.

### Certificats

- Projeté selon les principaux points de la norme UNI EN 1111
- Cartouche conforme à ACS – dossier n°04 ACC LY 112

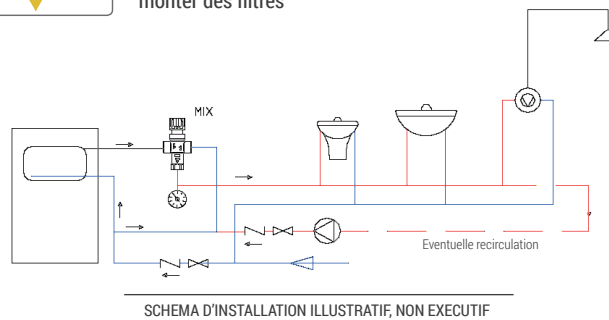
### Installation

- Respecter absolument les connexions: HOT (H) = entrée eau chaude; COLD (C) =



entrée eau froide; MIX = sortie eau mélangée.

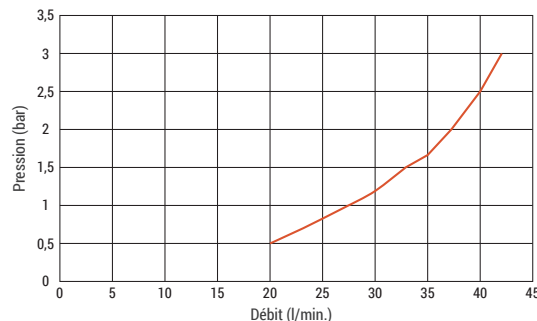
- Si la pression de l'eau chaude et froide sont sensiblement différentes entre elles, il est conseillé de monter sur les entrées des clapets de retenue.
- Si l'eau des alimentations contient des corps étrangers, il faut monter des filtres



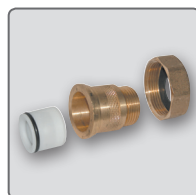
### Données techniques

- Entrées : 1" G mâle – Sortie : 1" G mâle
- Pression maximum d'exercice: 10 Bar (pour pressions au-dessus des 5 Bar, installer un réducteur)
- Pression recommandée: 50 kPa (0,5 Bar)
- Température max entrée : 85°C
- Plage de réglage : 30 ÷ 65°C
- Echelle graduée poignée 20 ÷ 50°C
- KV: 1,7 m3/h

Pression (bar)	0,5	1	2	3
Débit (l/min)	20	28	37	42



### Raccords de connexion pour mitigeurs

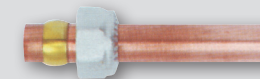


#### Art. P.002

Raccord 3 pièces en laiton avec vanne anti-retour à introduction en nylon, positionnable dans les deux sens.

Pour garantir un sens unique de circulation du fluide et prévenir de possibles contaminations.

Ecrou	3/4" F	1" F	1 1/4" F	1 1/2" F	1 1/2" F
Ecrou prisonnier	1/2" M	3/4" M	1" M	1" M	1 1/4" M
Art. code	P.002.02	P.002.03	P.002.30	P.002.10	P.002.14



#### Art. U.006

Ecrou en laiton avec ogive pour le raccordement avec tube en cuivre.

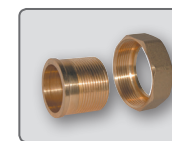
Raccord	3/8" F x 12	1/2" F x 14	1/2" F x 15	1/2" F x 16	1" F x 22
Art. code	U.006.52	U.006.54	U.006.55	U.006.56	U.006.72



#### Art. G.133

Raccord en laiton porte-thermomètre M.F. ou porte-sonde avec gaine. Fourni avec ou sans thermomètre Art. E.078.

Type de gaine	Longueur 30 mm - Ø interne 9,5 mm					
Diamètre Ø	1/2" F x 1/2" M	3/4" F x 3/4" M	3/4" F x 3/4" M	3/4" F x 3/4" M	3/4" F x 3/4" M	3/4" F x 3/4" M
Siège	conique	Euroconus	plat	plat	plat	plat
Type	sans therm.	avec therm.	sans therm.	avec therm.	sans therm.	avec therm.
Art. code	G.133.52	G.133.42	G.133.53	G.133.43	G.133.60	G.133.80
Type de gaine	Longueur 30 mm - Ø interne 10 mm					
Diamètre Ø	1" F x 1" M	1 1/4" F x 1 1/4" M	1 1/2" F x 1 1/2" M	1 1/2" F x 1 1/2" M	1 1/2" F x 1 1/2" M	1 1/2" F x 1 1/2" M
Siège	plat	plat	plat	plat	plat	plat
Type	sans therm.	avec therm.	sans therm.	avec therm.	sans therm.	avec therm.
Art. code	G.133.50	G.133.40	G.133.54	G.133.84	G.133.62	G.133.82



#### Art. G.183

Jonction en laiton composée de calotte tournant et écrou prisonnier. Siège plat.

Calotte Ø	3/4" F	1" F	1 1/4" F	1 1/2" F	2" F
Ecrou prisonnier Ø	1/2" M	3/4" M	1" M	1 1/4" M	1 1/2" M
Art. code	G.183.02	G.183.03	G.183.10	G.183.14	G.183.12

# ANTARES

for water and fire

1, Allée M. Pagnol - 69140 Rillieux la Pape  
 Tel: 0800 50 60 08  
 Fax: 0800 67 85 88  
 email: fr@antaresint.com  
 Internet: www.antaresint.com

# ANTARES

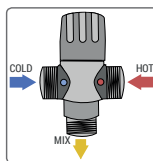
for water and fire



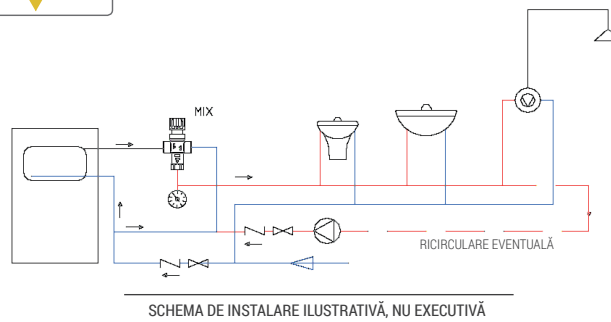
Familie produs: vane de amestec termostatiche - Seria Mix San

Cod: C.053.10

Descriere: Vană de amestec 1"



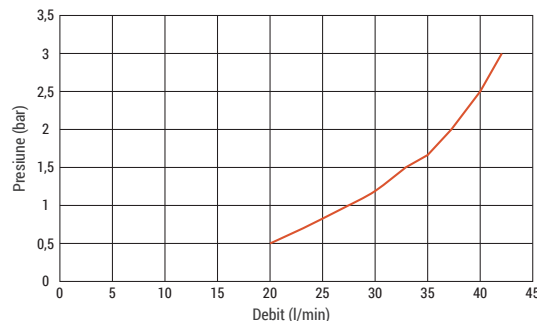
- Dacă presiunile apei calde sau reci sunt ușor diferite între ele trebuie montate pe intrări supape de reținere.
- Dacă apa conține corpuri străine trebuie montate filtre.



## Date tehnice

- Intrări: 1" G M. Ieșire: 1" G M.
- Presiune maximă de exercițiu: 10 bar (pentru presiuni peste 5 bar montați un reductor)
- Presiune recomandată: 50 kPa (0,5 bar)
- Temperatura max intrare: 85 °C
- Câmp de reglare: 30 - 65 °C.
- Scară gradată manopolă: 20 - 50 °C
- Kv: 1,7 m<sup>3</sup>/h

Presiune (bar)	0,5	1	2	3
Debit (l/min)	20	28	37	42



## RO Vană de amestec Art. C.053.10 de 1"

Vanele de amestec termostatiche reglează la o valoare prefixată temperatura apei amestecând automat apa caldă și apa rece. Permite maximul confort, o sensibilă economie de apă și energie, evită pericolul de opărire accidentală.

Vana este setată din fabrică la folosind apă rece la 15 °C și apă caldă la 65 °C la 3 bar. C.053.10 folosește un cartuș termostatic standard de 1/2".

Permite distribuția apei calde sanitare la temperatură constantă; o temperatură nu prea ridicată împiedică încrustări de calcar și posibilele coroziuni. În cazul lipsei alimentării cu apă caldă sau rece, vana de amestec blochează distribuția instantaneu.

Este ideală pentru instalațiile de distribuție a apei sanitare datorită cartușului fiind un dispozitiv precis și rapid, manopola cu scara în centigrade permite o utilizare comodă și intuitivă și chiar și operațiile de curățire și înlocuire sunt simple. Indicată pentru alimentarea dușurilor, cazilor, chiuvete etc în locuințe, școli, spitale, centre sportive etc. Această vană termostatică poate fi montată la intrarea oricărei utilizări sau în casele pe montate de distribuție a apei calde sanitare.

Manopola este dotată cu un buton roșu de blocare la 38 °C. Intrările și ieșirile sunt de 1" G M. Aplicând kitul, se poate cumpăra separat, se obțin intrări și ieșiri de 3/4" M cu supape de reținere DN20 pe intrări. I

Intrările vanei sunt deasemenea dotate pentru tubul de cupru de Ø 22 deci pot fi aplicate și kitul compuse de o piuliță de 1" și ogivă de Ø 22.

## Prestații idraulice

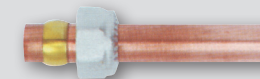
- A se vedea graficul Presiune/Debit
- Funcție anti opărire: în cazul lipsei apei reci în instalație vana de amestec închide automat intrarea apei calde intrerupând distribuția pentru a evita posibile opării

## Certificări

- Proiectat în conformitate cu norma UNI EN 1111
- Cartuș conform cerințelor ACS - dosar nr.04 ACC LY112

## Instalare

- Respectați conexiunile HOT (H) = intrare apă caldă; COLD(C) = intrare apă rece; MIX = ieșire apă amestec.



## Art. U.006

Piuliță din alamă cu inel din alamă pentru conectarea cu tubul de cupru.

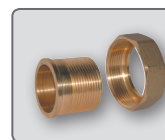
Legături	3/8" F x 12	1/2" F x 14	1/2" F x 15	1/2" F x 16	1" F x 22
Cod art.	U.006.52	U.006.54	U.006.55	U.006.56	U.006.72



## Art. G.133

Racord din alamă M.F. port-termometru ori port-sondă cu protecție. Este furnizat cu sau fără termometru Art. E.078.

Tip protecție	Lungime 30 mm. - Ø intern 9,5 mm.					
Diametru Ø	1/2" F x 1/2" M		3/4" F x 3/4" M		3/4" F x 3/4" M	
Extremitate	conică		Euroconus		plană	
Tip	fără term.	cu term.	fără term.	cu term.	fără term.	cu term.
Cod art.	G.133.52	G.133.42	G.133.53	G.133.43	G.133.60	G.133.80
Tip protecție	Lungime 30 mm. - Ø intern 10 mm.					
Diametru Ø	1" F x 1" M		1 1/4" F x 1 1/4" M		1 1/2" F x 1 1/2" M	
Extremitate	plană		plană		plană	
Tip	fără term.	cu term.	fără term.	cu term.	fără term.	cu term.
Cod art.	G.133.50	G.133.40	G.133.54	G.133.84	G.133.62	G.133.82

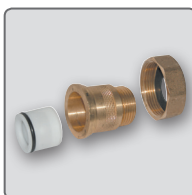


## Art. G.183

Conector în alama compus din calotă rotativă și prelungitor. Plană.

Calotă Ø	3/4" F	1" F	1 1/4" F	1 1/2" F	2" F
Prelungitor Ø	1/2" M	3/4" M	1" M	1 1/4" M	1 1/2" M
Cod art.	G.183.02	G.183.03	G.183.10	G.183.14	G.183.12

## Racorduri de conexiune pentru vane de amestec



## Art. P.002

Olandez din alamă cu supapă de sens din nylon poziționabil în amândouă direcții.

Pentru garantarea unui sens unic de flux pentru a preveni eventualele contaminări.

Piuliță	3/4" F	1" F	1 1/4" F	1 1/2" F	1 1/2" F
Ștuț	1/2" M	3/4" M	1" M	1" M	1 1/4" M
Cod art.	P.002.02	P.002.03	P.002.30	P.002.10	P.002.14

# ANTARES

for water and fire

Com. Baldoinești - 237005 Jud. Olt  
Tel: 0249 456533  
Fax: 0249 456530  
email: ro@antaresint.com  
Internet: www.antaresint.com