



INSTRUCTION MANUAL

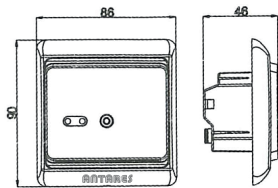


WIRELESS RECEIVER

INSTALLATION COMPONENT NON INTENDED FOR PUBLIC USE - DESIGNED IN ITALY - MANUFACTURED IN COUNTRIES OUTSIDE THE EU

Description and technical data

One to one wireless receiver with individual and adjustable limit temperature control circuit, which apply to control the electric heating devices or on/off valve actuator used in hydronic floor heating.

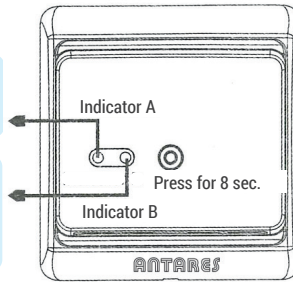


Dimensions in mm.

Voltage	3 A
Power Consumption	2 W
Wireless Frequency Output	433 MHz
Effective Transmission Distance	200 m. free space
External Limitation Value	30°, 40°, 50 °C adjustable
Factory Setting	30 °C
Limitation Switch Differential	-2 °C
Room Temperature	-5° ÷ 50 °C
Protective Housing	IP20
Housing Material	Anti-flammable PC

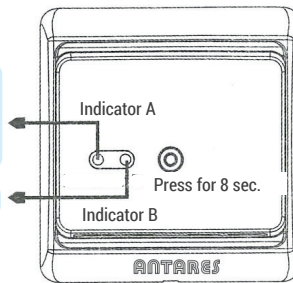
Description of working status

- Red long bright: Power
- Red light flashing: Receiver data
- Green light flashing: Code pairing state
- Green long bright: Heating on
- Red long bright: Limitation protective
- Rosso lampeggiante: Sensor ERROR
- Green light flashing: Selected the limitation value



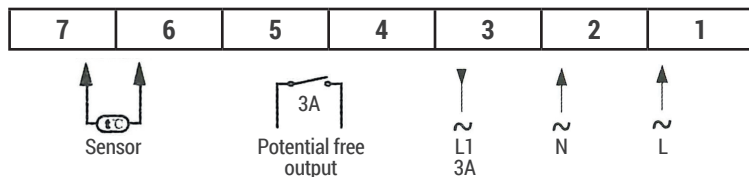
Limitation value selected

- Green: External limited at 30°C
- Red: External limited at 40°C
- Yellow: External limited at 55°C
- None: External limited closed
- Green flashing: Limit start

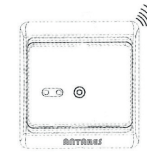


Press the button for 8 seconds with the receiver turned on until **indicator B flashes green** to enter the external limitation setting mode. **Indicator A green** indicates external limitation at 30°C - **indicator A red** indicates external limitation at 40°C - **indicator A yellow** indicates external limitation at 55°C - **indicator A off** indicates limitation/probe deactivated. Press the button gently to cycle through these 4 stages. The desired setting is automatically saved if no button is pressed for 8 seconds.

Connecting Diagram



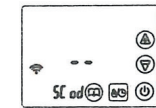
Code Pairing method



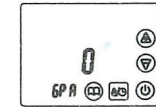
To enter code association mode, press the button for 5 seconds then release, indicator A becomes green and flashing. When code association is successful, immediately switch to initial mode. It will exit code pairing mode if nothing is pressed for 30 seconds.



Press the menu key to enter the advanced setting when in power off, press the menu key again till enter the fifth item code pairing, press + and - key to start code pairing. Modify the transmission power in the sixth item, the number more larger the transmission power more higher.

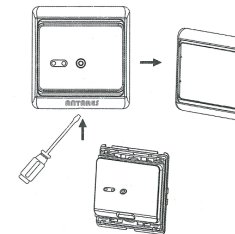


5C od: Start to code pairing
Press + or - key to start to code pairing with the receiver
LCD display - symbol flash 3 times

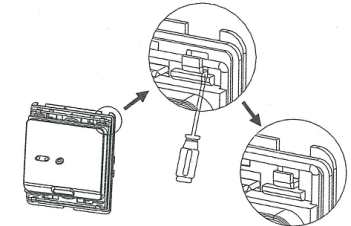


6P A: Select the wireless transmission power
Press + or - key to modify the power
Set range: 0-3,0 is Min, 3 is Max.
Press OFF key to quit the advanced setting.

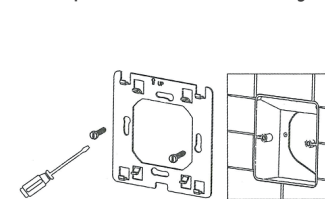
Assembly



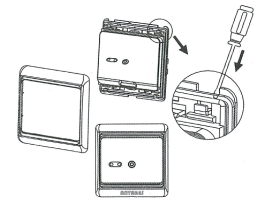
1 Detach the front part by levering it with a screwdriver in the recess located in the lower part as shown in the drawing.



2 Detach the back plate as follows.



3 Fix the back plate to the wall with screws and screwdriver.



4 Detach the front part by levering it with a screwdriver in the recess located in the lower part as shown in the drawing.