

ANTARES

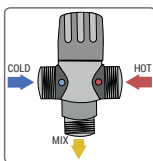
for water and fire



Product group: Thermostatic mixers - Mix San Series

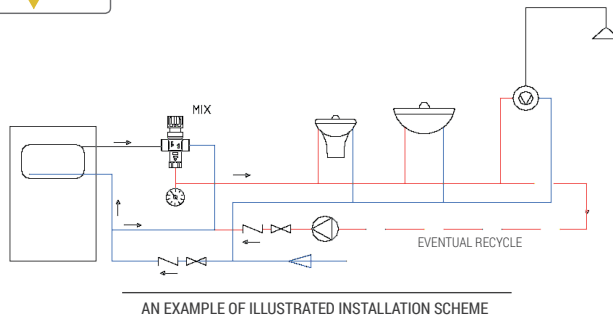
Code: C.053.10

Description: Thermostatic mixer 1"



entrance; MIX = outgoing mixed water.

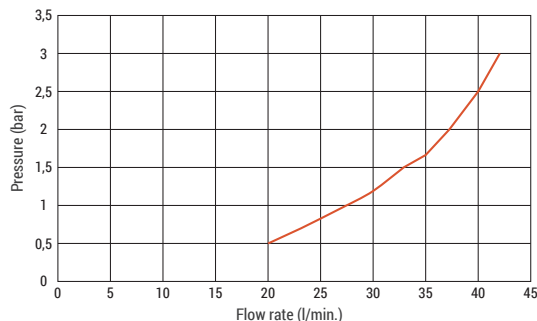
- If the pressure of the hot or cold water are very different amongst themselves you need to install on the entrance ports check valves.
- If the water coming in contains debris you need to install filters.



Technical Data

- Entrance 1" M outgoing 1" M.
- Max. working pressure 10 bar (for pressure over 5 bar install a reducer)
- Recommended pressure 50 kpa (0.5 bar).
- Max. incoming temp. 85°C
- Regulating range 30÷65°C
- Scale range on knob 20÷50°C
- KV 1.7 m3/h

Pressure (bar)	0,5	1	2	3
Flow rate (l/min)	20	28	37	42



UK Thermostatic mixer Art C.053.10 - 1"

Thermostatic mixers regulate automatically at a prefixed rate the temperature of hot and cold water.

They allow for maximum comfort, considerable water and energy saving, and avoids accidental scalding. The mixer is preset at the factory using cold water at 15°C and hot water at 65°C at 3bar.

The C.053.10 uses a standard cartridge of 1/2". It allows for the distribution of hot water at constant temperature: a not too high temperature inhibits calcium deposits and possible corrosion. In case of failing hot or cold water supply, the mixer blocks the flow instantly.

It is ideal for systems distributing domestic water because due to the cartridge it results in a precise and fast mechanism, and the knob showing the various stages of centigrades allows an easy use and cleaning or substitutions are simple. Ideal for showers, baths, washbasins in schools, hospitals, sports and leisure facilities etc. This thermostatic mixer can be installed wherever necessary or in pre-mounted inspection boxes where domestic hot water is distributed.

The knob is equipped with a red stop button at 38°C. The incoming and outgoing ports have a 1" M G connection. Using the kit, which is sold separately, you obtain incoming and outgoing ports of 3/4" m with non return valves DN on the ports.

The ports are also equipped for seating copper pipe Ø 22, therefore kits can be applied containing nut 1" and olive Ø 22.

Hydraulic performance

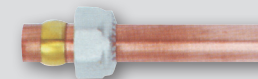
- See the illustration delivery/pressure
- Antiscalding function in case cold water stops flowing from mains, the mixer automatically closes the incoming hot water stopping the outgoing flow to avoid scalding.

Certificates

- Designed according to the main requirements standards EN 1111
- Cartridge compliant to requirements ACS - dossier n. 04ACC LY 112

Installation

- Observe strictly the connections: HOT (H) = hot water entrance ; COLD (C) = cold water



Art. U.006

Brass nut with olive in brass for the connection with copper pipes.

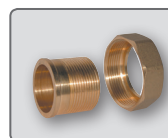
Connections	3/8" F x 1/2" M	1/2" F x 1/4" M	1/2" F x 1/5" M	1/2" F x 1/6" M	1" F x 2/2" M
Order code	U.006.52	U.006.54	U.006.55	U.006.56	U.006.72



Art. G.133

M.F. brass fitting for thermometer or probe immersion pocket. With or without thermometer art. E. 078.

Cover type	Length 30 mm. - internal Ø 9,5 mm.					
Diameter Ø	1/2" F x 1/2" M		3/4" F x 3/4" M		3/4" F x 3/4" M	
End type	cone		Eurocone		flat	
Model	w/o thermom.	w thermom.	w/o thermom.	w thermom.	w/o thermom.	w thermom.
Order code	G.133.52	G.133.42	G.133.53	G.133.43	G.133.60	G.133.80
Cover type	Length 30 mm. - internal Ø 10 mm.					
Diameter Ø	1" F x 1" M		1 1/4" F x 1 1/4" M		1 1/2" F x 1 1/2" M	
End type	flat		flat		flat	
Model	w/o thermom.	w thermom.	w/o thermom.	w thermom.	w/o thermom.	w thermom.
Order code	G.133.50	G.133.40	G.133.54	G.133.84	G.133.62	G.133.82

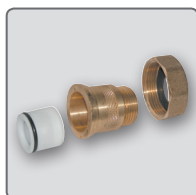


Art. G.183

Brass joint consisting of swivel metal sleeves and spigot. Flat seat.

Metal sleeve Ø	3/4" F	1" F	1 1/4" F	1 1/2" F	2" F
Spigot Ø	1/2" M	3/4" M	1" M	1 1/4" M	1 1/2" M
Order code	G.183.02	G.183.03	G.183.10	G.183.14	G.183.12

Connection fittings for mixing valves



Art. P.002

Brass fitting with nylon check-valve insertion positioned in two directions.

To ensure a single flow direction to prevent possible contamination.

Nut	3/4" F	1" F	1 1/4" F	1 1/2" F	1 1/2" F
Spigot	1/2" M	3/4" M	1" M	1" M	1 1/4" M
Order code	P.002.02	P.002.03	P.002.30	P.002.10	P.002.14

ANTARES

for water and fire

Kent Business Centre - Romney Place - Maidstone ME15 6LH
 Tel: 0845 60 18 681
 Fax: 0845 60 18 682
 email: uk@antaresint.com
 Internet: www.antaresint.com