



Instruction manual
for circuit separator "SEPACIR"

Art. E.670

Description

Decoupled circuit system separator "SEPACIR" with coverings heath. Connections: 3/4" for heating and 1/2" for circuit feed

"SEPACIR" has been conceived for the installation of new boilers in old heating systems. With time, inside heating systems there are deposits of dirt and sludge created by the crystallization of minerals present in water. To avoid for this grime to damage your new boiler, it is necessary to install a circuit separator on the old heating system with that of the new boiler by installing an adequate heat exchanger.

In order to make this operation simple we have conceived a small cabinet, a separator "SEPACIR" especially conceived very compact in order to install under the wall boiler in two versions:

- Complete with expansion vessele
- Reduced without the expansion vessele to be installed elsewhere, above present boiler with relevant pipe work although the item is compact it can be installed elsewhere.



Range of products

Version equipped with expansion vessele

Without dirt separator				With dirt separator			
Order Code	Power KW	Vessele lt.	Depth E	Order Code	Power KW	Vessele lt.	Depth E
E.670.04	24	8	262 mm	E.670.08	24	8	262 mm
E.670.02	32	10	262 mm	E.670.07	32	10	262 mm

Reduced version with expansion vessele as equipment

Without dirt separator				With dirt separator			
Order Code	Power KW	Vessele lt.	Depth E	Order Code	Power KW	Vessele lt.	Depth E
E.670.34	24	8	164 mm	E.670.57	24	8	164 mm
E.670.52	32	10	164 mm	E.670.58	32	10	164 mm

Characteristics

Working temperature range: 5-90 °C
max working pressure: 10 bar
Threaded female connections: EN 10226-1
Pump: Alfamax RS 25/60

Expansion vessele:
• Preset 1,5 bar
• Max working pressure: 3 bar

Safety valve:
preset pressure 3 bar

Compatible fluids
Water, glycol solutions (max 50%)

Dirt separator: *Delivery* 1,3m³/h

Materials

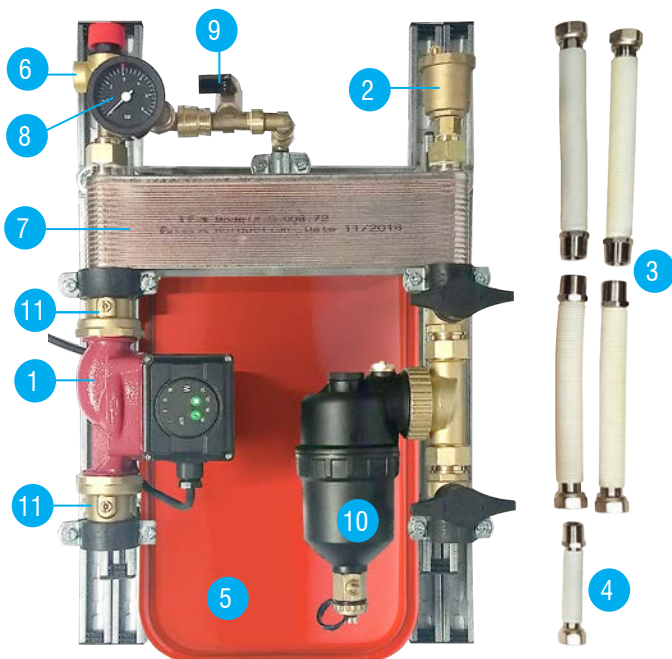
Ball valve:
•Body : brass EN 12165 CW617N
•Washers PTFE, EPDM, Viton

Pump:
•Body : Cast iron
•Power 230V - 50/60 Hz
•Protection degree: IP44
•Wheelbase: 130 mm
•Connections: G 1 1/2" M (ISO 228-1)

Dirt separator:
•Body: in polymer
•Components and brassvalves

Heatexchanger:
•Upperplate in steel 304
•Intermediate platesteel 316
•Connections steel 304

Components

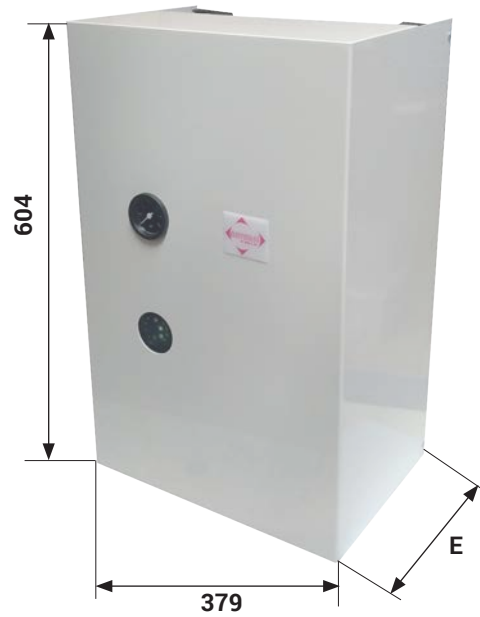
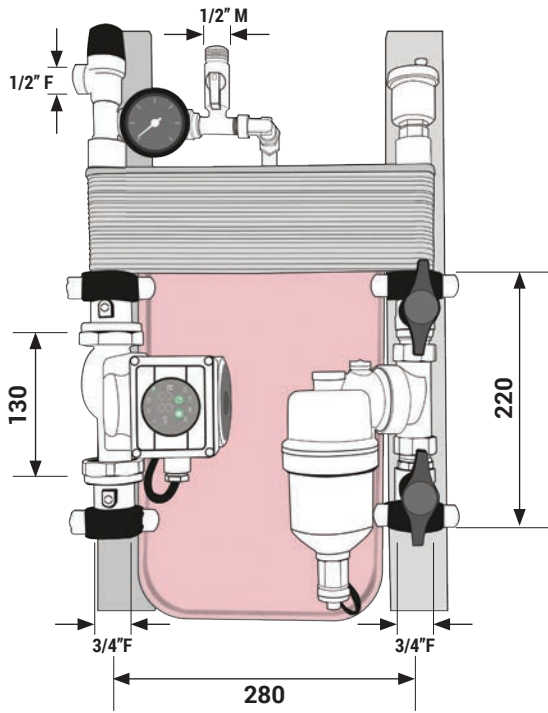


E.670

1	Pump Alfamax RS 25/60
2	Automatic deaerator
3	Flex for connection to boiler and system (n.4) 3/4"
4	Flex for loading system(n.1) 1/2"
5	Expansion vessele (with or without)
6	Safety valve 3 bar
7	Plate heat exchanger
8	Capillary manometer
9	Feeding tap
10	Dirt separator (optional) with two ball valves with knob
11	Ball valve with screw driver adjustment.
12	Sheath

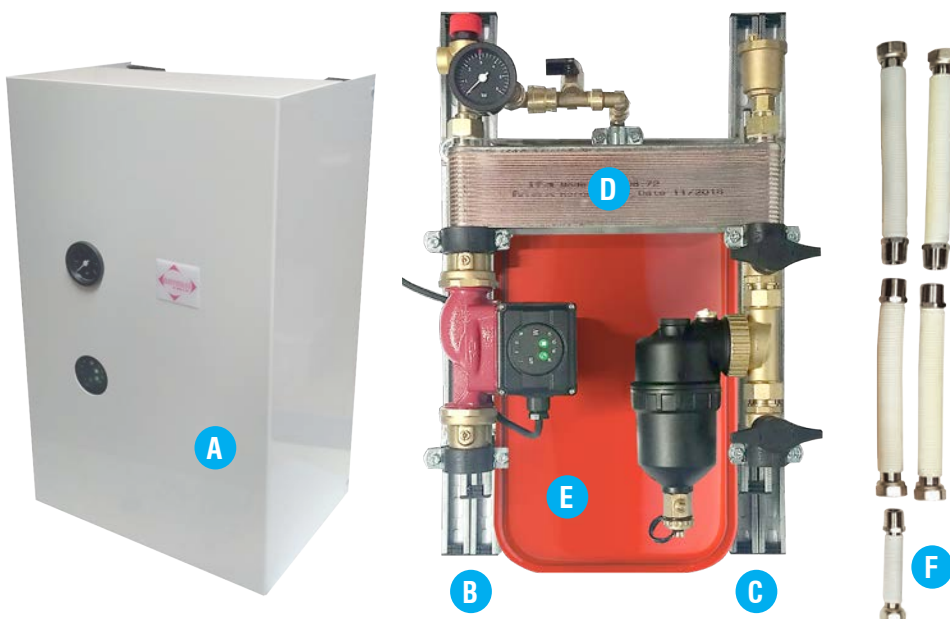
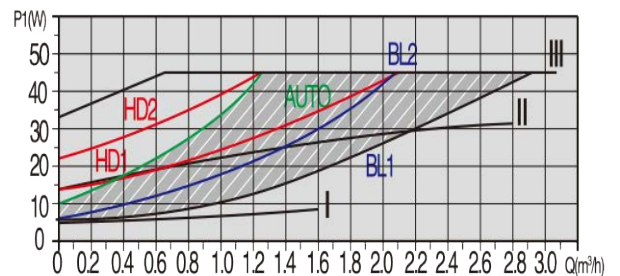
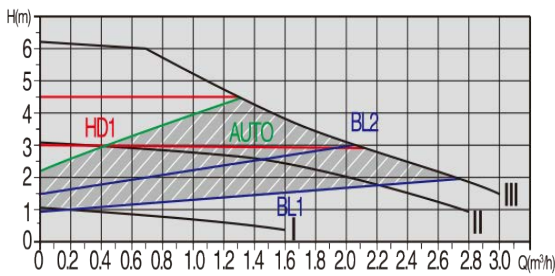
For instructions on use of the circulator please see specific booklet enclosed.

Dimensions



Version	E.670.04 - .02 - .08 - .07	E.670.34 - .52 - .58 - .57
E	262 mm	164 mm

Delivery and power absorption of pump



The "SEPACIR" assembly is composed of:

- Sheath **A**
- Flow to system **B** supplied with Ball valve with screw driver adjustment before and after the circulator.
- Return system **C** magnetic dirt separator (in planned versions) complete of two ball valves with knob.
- Heat exchanger **D** supplied with capillary pressure switch, feeding valve, safety valve and deareator.
- Expansion vessel **E** (incorporated or external)
- Flexible hoses for connection **F** from 3/4" for connection to the system and the boiler, for 1/2" for connection to feeding valve.

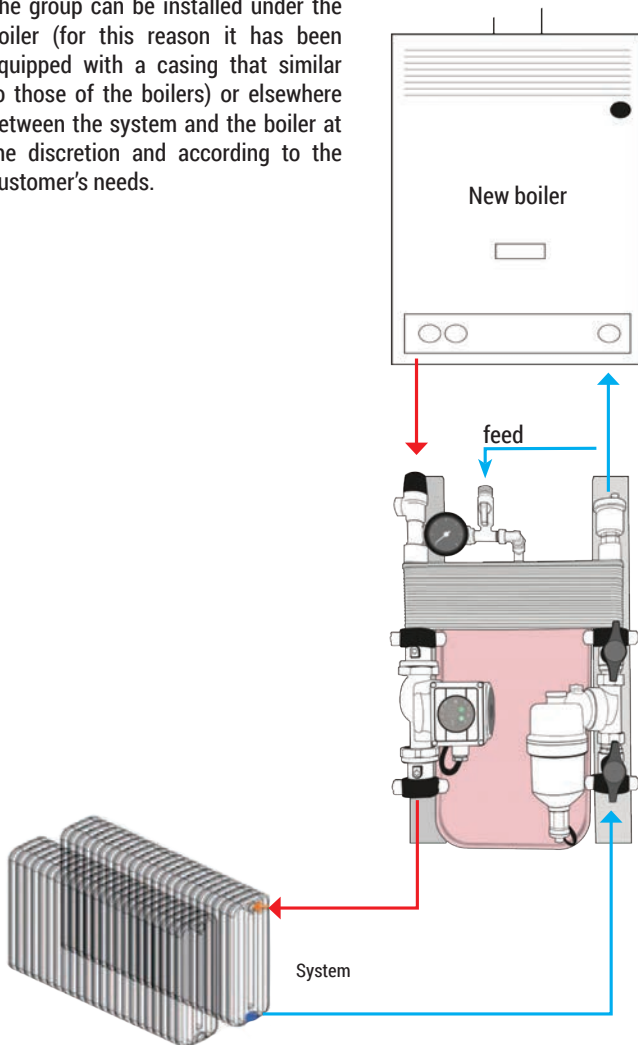
Advantages:

- **Garantee:** more and more frequently boiler manufacturers do not offer guarantees on their products which are installed on old systems unless a decoupler is present.
- **Life span:** the installation of the SEPACIR group prolongs the life of the boiler as it prevents the components of the same (exchanger, circulator, etc.) from being contaminated by the sludge present in the system.
- **Front devices:** all devices such as the pump menu and the pressure switch are up front and the special openings on the casing allow easy control and adjustment.
- **Quick replacement:** the circulator and dirt separator are equipped with ball valves, this allows their replacement and cleaning without having to empty the system.
- **Flat gaskets:** the various components are connected to each other by means of flat seal fittings. This speeds up installation by avoiding the use of hemp or other sealants.

Installation:

Model with internal expansion vessel

The group can be installed under the boiler (for this reason it has been equipped with a casing that similar to those of the boilers) or elsewhere between the system and the boiler at the discretion and according to the customer's needs.



Model with external expansion vessel

The group with external expansion tank can be installed like the one with the tank inserted, under the boiler or elsewhere. The vessel can be installed above the current boiler with a special pipe or elsewhere.

